

South Hutchinson  
Mennonite Church

# Connections

December 18, 2011



Worship.



Connect.



Grow.



Serve.



Worship.

**Worship Fully:**

Discovering God daily and responding with awe.

## This Week at SHMC

~ Events at Journey @ Yoder in italics ~

### Today, December 18

7:30 am Prayer gathering in Room 24  
8:30, 9:45 & 11:00 am

Worship Celebrations

9:29 am *Worship Celebration*

9:30 & 10:45 am Coffee & Juice are in the Fellowship Hall. Please help yourself.

9:45 am Christian Education classes  
For all ages, student small groups

10:29 am *Children's classes, student small groups and 2nd Hour Scripture*

6:00 pm *JHM (Junior High Ministry) at the Activity Center*

7:00 pm *HSM (High School Ministry) at the Worship Center*

### Monday, December 19

7:00 pm *Open Gym Night*

### Tuesday, December 20

6:00 pm *Activity Center Reserved*

### Wednesday, December 21

7:30 pm Praise Team Practice

### Saturday, December 24

6:00 pm Christmas Eve Service  
You are invited to stay for fellowship time with snacks and coffee

### Next Sunday, December 25

7:30 am Prayer gathering in Room 24  
10:00 am Worship Celebration

No nursery or Sunday School  
9:29 am *Worship Celebration*  
*No Nursery or Sunday School*



## Christmas Schedule at SHMC

**Christmas Morning**—We will have 1 service at each campus. SH Celebration will be at 10:00 am and the Yoder Celebration will be at 9:29 am.

There will be no Sunday School classes or Nursery on Christmas day.

**Office will be closed** Dec. 26 and 27

**December 31**— All Church New Year's Eve Party for all ages at the Journey @ Yoder Activity Center.

**January 1**, there will be 2 services at **9:00 am** and **10:30 am** at South Hutch. There will be no Sunday School classes at Journey at Yoder or South Hutch. Nursery will be staffed

The service at Journey at Yoder will be at 9:29 am.

Office will be closed January 2

## Upcoming Calendar

**January 8** Coffee With the Pastors 11:00 am at the South Hutch campus

**January 8** Town Hall Meeting with carry-in meal. Childcare will be provided.

**January 22** Annual meeting with joint worship service at Journey @ Yoder

**Spring**—trip to Bolivia (end of April). Information sheet is beside the Piñata



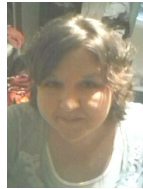
**Connect with Others!**  
Building authentic relationships and experiencing God in community.

## SHMC Connections

### Meet Our New Members

#### Felissa Wiens

Felissa lives in Nickerson. She has been a stay at home mom for the past two years. Before that she worked as a para (teacher aide).



She and Gerry have been married for 19 years and have seven children in their blended family. Their ages range from 22 to 7. Her hobbies include crafting, sewing (although she says she is not great at it), baking, reading, riding three wheelers and camping. What she likes to do to relax is read or do crafts. She is looking forward to being a part of SHMC and getting to know people better and to continue to work with kids of the church whenever she can.

#### Howard and Eileen Burkholder

Howard and Eileen have been married 52 years. They are former members of the Yoder Mennonite Church. They are both retired after a total of 50+ years from The Mennonite Friendship Manor. They have 3 grown children and 10 grandchildren, Lonnie and family (Colorado Springs, Colorado), Lynette and family (Topeka, Kansas), Lyle and family (Topeka, Kansas). Eileen enjoys quilting and collecting nativity scenes. Howard enjoys woodworking and genealogy. Another enjoyment is going to Colorado to our Cabin and enjoying the beauty of God's creation, the coolness, the freshness and the serenity.



#### Christy Barker

Christy Barker lives just two blocks down the street from South Hutch Mennonite Church's South Hutch campus with her two year old beagle, Maggie. She is as a Paraprofessional at McCandless School where she works with 1<sup>st</sup> and 2<sup>nd</sup> graders. She is also a Vision Leader at the McCandless Boys and Girls Club after school program working with 4<sup>th</sup>, 5<sup>th</sup> and 6<sup>th</sup> graders. She enjoys reading Biblical fiction and sewing, especially quilting. She has discovered a love for archery in the past year. At Christmas, she is the family designated cookie baker. In the summer, she enjoys mowing her yard and growing flowers.



#### **A** New Year's Eve Par-tay!

Young and old and everyone in between! A fun, safe party for everyone. Basketball, volleyball, games and music. Bring snacks/drinks to share, games to play and your excitement for the new year!

## Area Connections

### Rocky Mountain Mennonite Camp

**M** **Men's Retreat** March 2-4, 2012. Join other conference men for the weekend in working, playing, singing and worshipping together.

**CA** **Young Adult Snow Camp** February 24-26, 2012. Worship times this year will be led by Dwell unit participants, a part of the DOOR Network in Denver. The weekend will also include challenging (yet fun) group games and chances to enjoy the beauty of creation. Cost is \$65. Register at [www.rmmc.org](http://www.rmmc.org).

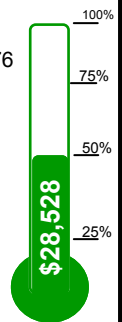
### For the Record

December Budget \$61,276

December 11 Attendance: 427  
Our Praise Offering: \$10,739.89

SHMC is a loving congregation, joyfully giving God 10% of our income!

**Advent Conspiracy Giving:**  
**\$22,351.81**



### Christmas—Sunday December 25

Christmas this year is on the last Sunday of December. Historically, this will impact worship attendance, and consequently church income. Please consider this in your gifting plans. Consider using electronic giving for a one-time year end gift or a recurring giving program (preferred). Simply go to [www.shmcfamily.org](http://www.shmcfamily.org) and click "Electronic Giving". It's easy, quick and highly secure. As we look back, God has always provided and we believe God will continue to provide necessary resources for the places God is at work in us and through us. Thank you for your generosity as you prayerfully consider your contributions to the ongoing ministries of SHMC.

Humbly Submitted,  
John Davis, Treasurer



## Student Ministries

### **S** Sunday mornings:

**Student Small Groups** meet weekly on Sunday mornings at 9:45 am at South Hutch and at 10:29 am at Journey @ Yoder. Small group time gives students a way to Connect with Others, Grow in Christ, and Serve with Passion. Small groups are based on gender and age to allow students to really connect and share with each other. We are doing some awesome studies and also have opportunities to serve the larger church.

### **S** Student Ministries Sunday evenings:

**JHM (Junior High Ministry)** 6:00 to 7:30 pm at Journey @ Yoder. Fun and crazy games and a time for worship.

Dec 18 PARTY! Everyone brings snacks or drinks. Don't forget your White Elephant gift!

**Dec 25 and Jan 1— No Youth Activities**

**HSM (High School Ministry)** meets at 7:00 pm for worship then continues on until 8:30 with games and hanging out.

Dec 18 PARTY! Everyone brings snacks or drinks. Don't forget your White Elephant gift!

**Dec 25 and Jan 1— No Youth Activities**

### Up Coming Events

**January 7, High School Students** are invited to

**Out of the Pew** Event at Journey @ Yoder. Cost

\$5.00. Registration deadline is TODAY!



**Young Christian's Weekend (March 2012)** Register by Dec. 28

Deposit is \$40, Total \$120. After December 28 cost is \$135.00



**CA** **Young Adults—a new Sunday school group** will meet today, December 18 at 9:45 in room #27 across from the office at the South Hutch campus. We will decide together what we're interested in talking about whether it's Bible study or discussing topics. If you would like more information, please contact Susan Nisly at 620-474-6143 or email [snisly@hotmail.com](mailto:snisly@hotmail.com).

## Children's Ministry

### **C** December's Virtue:

**Generosity:** Making someone's day by giving something away.

**This week's Bible Story:** Wise Men Visit Jesus

**Bottom Line:** When you give, it shows others how valuable they are.

**There will be no** Sunday School classes for children on Christmas morning and New Year's day.



On Christmas day, the nursery will be open, but will **not** be staffed with volunteers.

**Due to holiday schedules** we are postponing the January KIDJam one week, to January 11. We'll explore our January virtue and how to live it out in the world. See you then!

### **A** Get Threaded into the Story

You have an epic role to play. Get threaded into the biggest story of all time. Experience God's heart for all peoples and encounter the momentum of the World Christian Movement. Perspectives will open the eyes of your heart with fresh knowledge and understanding of God's unchanging purposes and why they're relevant to your life.

15 instructors in 15 weeks - learn firsthand from the global experiences of pastors, professors, Biblical scholars, mobilizers, theologian, missiologists and missionaries from the field.

Starting January 15 at Crosspoint Church - Westbrook Campus. Earn college credit. Contact Alaina Kaufman for more information.

Get Threaded and Register today at [perspectives.org](http://perspectives.org).

# Grow in Christ:

Knowing Jesus and modeling our lives after Him.





Serve.

Serve with Passion:

Joining God's mission to extend love, forgiveness, and compassion to the world.

### **A** Advent Conspiracy

Meet **Isaac Shue**, the man behind the images of Ninos de Samuelito. Isaac is from Harper, KS and studied art at Hesston and Goshen Colleges. He served for a year with Mennonite Mission Network's Radical Journey working with the Bolivian Church at Samuelito



Daycare. When his year was finished he knew he wasn't. He went back to Bolivia and currently works at the daycare mornings in a room with 2-4 year olds and afternoons marketing the daycare and gaining support to keep it going. Read his complete bio at [www.shmcfamily.org/advent-conspiracy](http://www.shmcfamily.org/advent-conspiracy)

**Total Raised** as of December 11, 2011 is \$22,351.81, which is 55% of the goal of \$40,500.

### **P** Passionate about the "Ninos de Samuelito"?

We are exploring the possibility of a **spring mission trip** to Bolivia. Information is available at the Advent Conspiracy table. If you are interested, contact Pastor Sheri.

**A** **MEDA Trust Update:** The Micro Finance institution in Afghanistan is able to operate without any more infusion of loan capital. The loan money received (from Advent Conspiracy 2010) will be re-loaned as it is repaid. Thank you again for your support.

**Thank you** for the donation of quilts to The Warm Embrace Project. Six children in foster care will enjoy the warmth you provided.

Ellen Rothe  
Hutchinson SRS

**M** **Hands and Feet Ministry** needs a few strong, young men to occasionally help move a couch or other heavy pieces of furniture. We can normally move these pieces after 5 or 5:30.

Most of the families we serve are single mothers who are having a very difficult time make ends meet. Some are 2 parent families who have suffered from our economic down turn. Please call the church office if you can help occasionally. (663-4244)

### **L** Leadership Team Report

Following our Leadership Team retreat, we would like to share two updates with the congregation on matters under discussion.

First, we continue to call everyone to prayer and listening to the Spirit and each other as we corporately discern God's leading on the proposed name change for the church. To move that process forward, we are planning a town hall meeting Sunday, January 8 (following a carry-in lunch) for discussion and prayer on the matter. By Sunday, January 22, we are planning to share a finalized proposal, which would then be voted on Sunday, February 5.

Second, the Leadership Team continues to envision multisite ministry as one response to Jesus' command to share the Gospel and make disciples. SHMC and South Central Conference have been asked to consider a multisite outreach in the McPherson area. This discussion is just beginning, so there are few specific details to report; however, we invite the congregation to pray that the Lord would guide all these conversations to establish his will.

**A** All    **W** Women    **M** Men    **S** Student    **C** Children    **CA** College Age

### **Our staff is here to walk with you**

Howard Wagler, Lead Pastor  
Eric Miller, Associate Pastor  
Sheri Saner, Children's Outreach Pastor  
Jeremy Patterson, Journey @ Yoder Campus Pastor  
Jesse Blasdel, Student Outreach Pastor  
Cindy Headings, Administrator  
Jean Willems, Receptionist/Secretary  
John Davis, Treasurer  
Kim Easdon, Treasurer Assistant  
Phil Meyer, South Hutch Custodian  
Dedra Sawatzky, Journey Custodian

[howardw@shmcfamily.org](mailto:howardw@shmcfamily.org)  
[ericm@shmcfamily.org](mailto:ericm@shmcfamily.org)  
[sheris@shmcfamily.org](mailto:sheris@shmcfamily.org)  
[jeremyp@shmcfamily.org](mailto:jeremyp@shmcfamily.org)  
[jesseb@shmcfamily.org](mailto:jesseb@shmcfamily.org)  
[cindyh@shmcfamily.org](mailto:cindyh@shmcfamily.org)  
[jeanw@shmcfamily.org](mailto:jeanw@shmcfamily.org)  
[johnd@shmcfamily.org](mailto:johnd@shmcfamily.org)  
[kime@shmcfamily.org](mailto:kime@shmcfamily.org)

**South Hutchinson Mennonite Church**

808 S. Poplar, South Hutchinson, KS 67505 ■ 620-663-4244 ■ [www.shmcfamily.org](http://www.shmcfamily.org)